



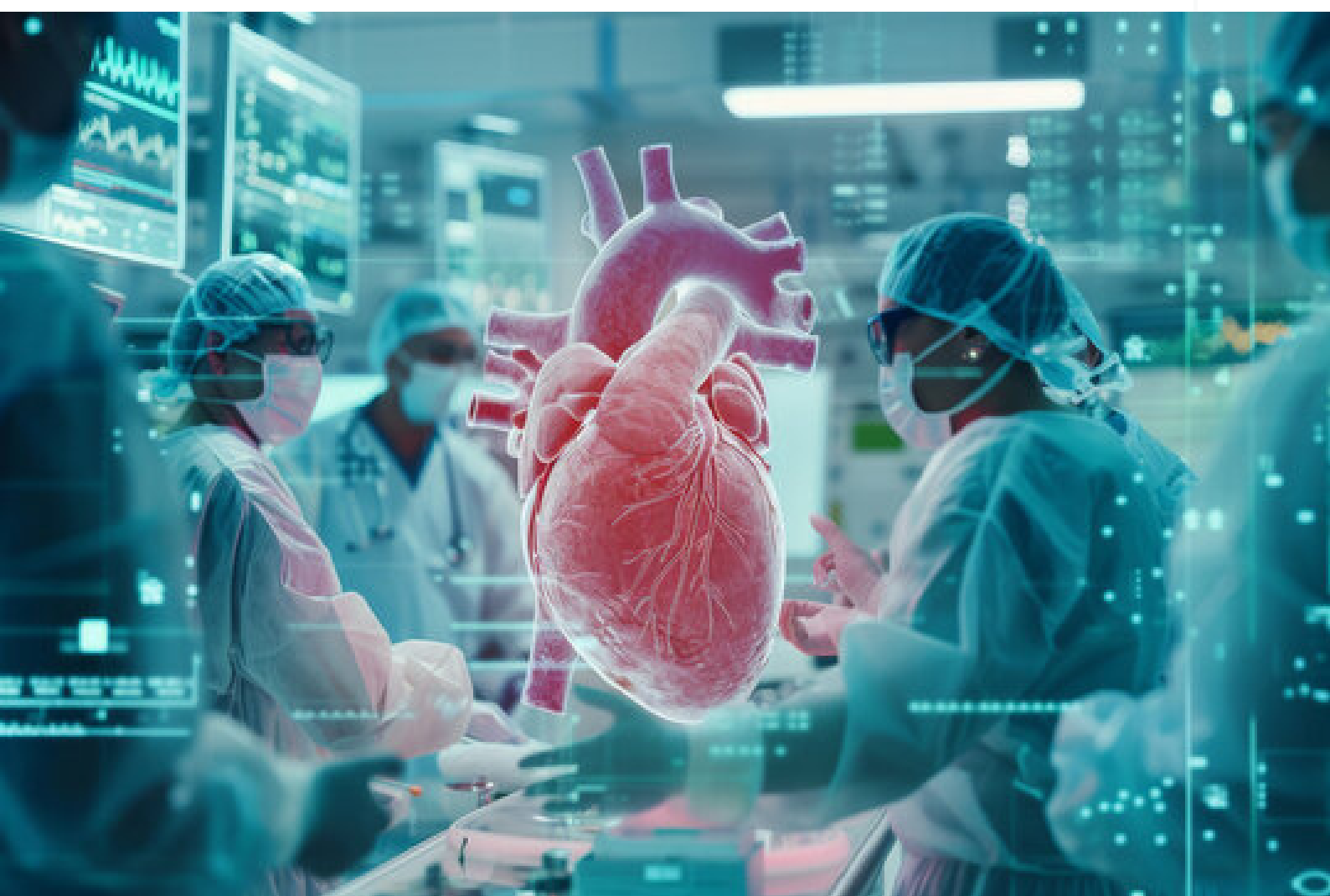
TRANSFORMING **HEALTHCARE** IN EVERY DIRECTION



NEPHROLOGY PRODUCTS
CARDIAC SURGERY PRODUCTS
ANESTHESIA PRODUCTS
CRITICAL CARE PRODUCTS
CARDIOLOGY PRODUCTS
GENERAL SURGERY PRODUCTS

PRODUCT
CATALOGUE 2024

CARDIAC SURGERY



PERFUROX

ARTERIAL CANNULA



DESCRIPTION

One Piece body, Straight or Curved tip, available with connector acceptance, vented connector, or non-vented connector. An adjustable or fixed depth ring together with tip & depth line precise position of all cannula.

ARTERIAL CANNULA PEDIATRIC ONE-PIECE



DESCRIPTION

These cannula feature beveled, thin wall tips with elongated, one-piece, kink resistance wire reinforce bodies. This construction allows for higher flow rates with a minimal pressure differential. An introducer along with depth markings permits precise positioning of the cannula.

PERFUROX

ARTERIAL CANNULA WITH WIRE REINFORCED



DESCRIPTION

One Piece body, Straight or Curved tip, available with connector acceptance, vented connector, or non-vented connector. An adjustable or fixed depth ring together with tip & depth line precise position of all cannula.

CARDIOPLEGIA PERFUSION ADAPTERS



ARTERIAL FILTER



FEATURES

- ✓ Adult arterial filter with connections 3/8 inlet & outlet.
- ✓ Arterial filter with connections 3/8 inlet & outlet with a bypass loop.
- ✓ Adult arterial filter with connections 3/8 inlet & outlet with bypass loop & purge line.
- ✓ Pediatric arterial filter with connections 3/8 inlet & outlet.
- ✓ Pediatric arterial filter with connections 3/8 inlet & outlet with a bypass loop.
- ✓ Pediatric arterial filter with connections 3/8 inlet & outlet with bypass loop & purge line.
- ✓ Infant arterial filter with connections 1/4 inlet & outlet.
- ✓ Infant arterial filter with connections 1/4 inlet & outlet with a bypass loop.
- ✓ Infant arterial filter with connections 1/4 inlet & outlet with bypass loop &

SPECIFICATION:

ADULT FILTER

- 40 µm Polyester screen filter.
- Max. blood flow 8L/min.
- Priming volume of 179 ml.
- Excellent air handling.
- Excellent visibility & easy priming.

PEAD. FILTER

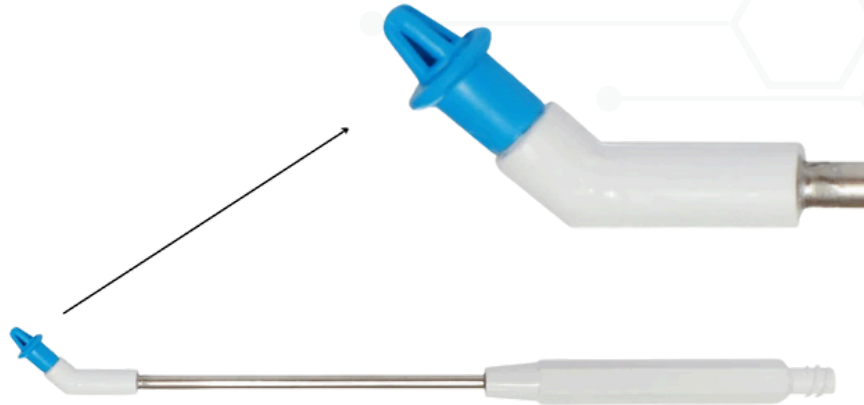
- 40 µm Polyester screen filter.
- Max. blood flow 5L/min.
- Priming volume of 90 ml.
- Excellent air handling
- Excellent visibility & easy priming.

INFANT FILTER

- 40 µm Polyester screen filter
- Max. blood flow 3.2L/min.
- Priming volume of 35 ml.
- Excellent air handling.
- Excellent visibility & easy priming.

PERFUROX

CORONARY ARTERY OSTIAL CANNULA



DESCRIPTION

These cannulas feature flanged, radiopaque basket tips or soft silicon tips attached to a large bore. Malleable stainless steel shafts. All cannula has a female Luer connection site.

HEART LUNG PACK



FEATURES

- ✓ Class VI implant-tested tubing.
- ✓ Non-kinking, transparent, clear tubing
- ✓ Options of clear or colour stripes Red/ Blue/ Green/ Yellow, DEHP free
- ✓ High-quality Heart Lung packs can be customized for the individual requirements of various cardiac. surgical procedures for Adults, pediatrics, and Infant.
- ✓ Options of components include Gas line filter, Pre by-pass filter, Arterial filter, Leucocyte Filter, SpO2 monitoring, Tubing organizer, Sucker, and LV Vents.

ORDERING INFORMATION:

- ✓ Std. Pack with Arterial Filter.
- ✓ Contact for nonobligatory drawings/quotes/samples.
- ✓ Additional components can be added per requirements.

MISTER BLOWER



FEATURES

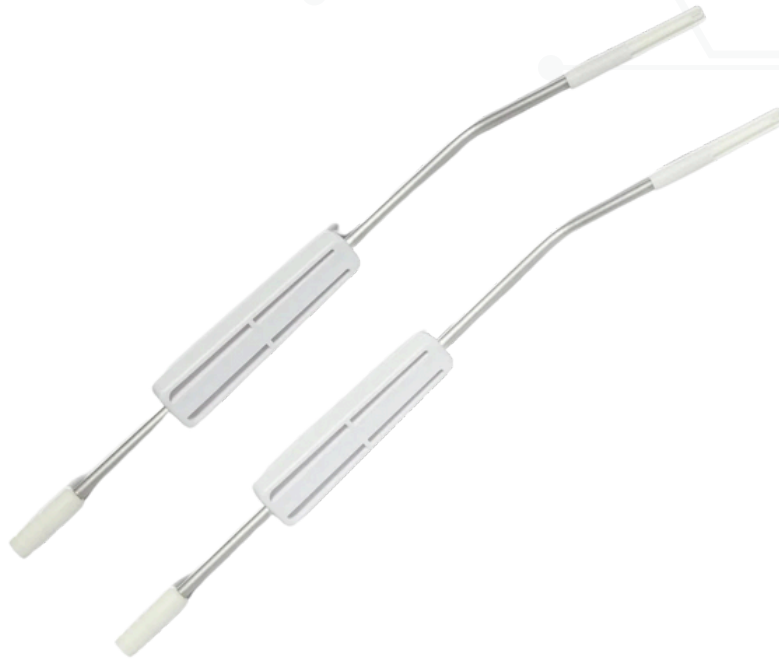
- ✓ Advanced fluid/gas mixing technology for controlled delivery of CO2 and saline during off-pump surgery.
- ✓ Consistent & predictable blood-clearing mist.
- ✓ Improved visibility at anastomosis and surgical site.
- ✓ Class VI implant tested tubing, DEHP Free.
- ✓ Only blower cannula without tubing and set available

ORDERING INFORMATION:

- ✓ Blower with tubings and fluid set.

PERFUROX

RIGID SUCTION TUBES



SUCKER ADULT

These suction tubes feature a comfortable hand grip. The tip shaft is made from rigid stainless steel. The Macro Sucker Has a fluted pool tip to maximize suction and minimize tissue trauma.

SUCKER PEDIATRIC

The Sucker Pediatric has a soft, vented tip designed to clear blood from the anastomotic site with gentle suction.

IMPORTANT SAFETY INFORMATION:-

Care and caution should be taken to avoid damage to vessels and cardiac tissue during cannulation or other cardiac surgery procedures.

VENOUS CANNULA



TWO-STAGE, WIRE-REINFORCED WALL

PART NO	SPECIFICATIONS
NORMAL BODY	
AAC-TS32/40 RB	32/40 Fr
AAC-TS34/46 RB	34/46 Fr
AAC-TS36/46 RB	36/46 Fr
AAC-TS36/51 RB	36/51 Fr

PART NO	SPECIFICATIONS
OVAL BODY	
AAC-TS32/40 OB	32/40 Fr
AAC-TS34/46 OB	34/46 Fr
AAC-TS36/46 OB	36/46 Fr
AAC-TS36/51 OB	36/51 Fr

PART NO	SPECIFICATIONS
SCREW BODY	
AAC-TS32/40 SB	32/40 Fr
AAC-TS34/46 SB	34/46 Fr
AAC-TS36/46 SB	36/46 Fr
AAC-TS36/51 SB	36/51 Fr

PERFUROX

CARDIOPLEGIA DELIVERY SET



FEATURES

- ✓ Heat Exchanger Pleatal type.
 - ✓ Class VI implant-tested tubing.
 - ✓ Integrated Heat exchanger with bubble trap.
 - ✓ Priming volume 35 mL.
 - ✓ High Cooling efficiency.
 - ✓ Easy set-up & priming.
 - ✓ Non-toxic & pyrogen free.
 - ✓ Blood inlet-outlet connection - 1/4".
 - ✓ Built-in bridge for choice of 100% Blood or 100% Cardioplegia solution delivery.
- Heat Exchanger Coil.



OUR SPECIALITIES:-

NEPHROLOGY PRODUCTS
CARDIAC SURGERY PRODUCTS
ANESTHESIA PRODUCTS
CRITICAL CARE PRODUCTS
CARDIOLOGY PRODUCTS
GENERAL SURGERY PRODUCTS



ADDRESS:-

PLOT NO 232, SECTOR 68, IMT MAIN
RD, INDUSTRIAL AREA, BALLABHGARH,
FARIDABAD, HARYANA 121004